

225 NORTH MAIN STREET - SUITE 501
SALISBURY, NORTH CAROLINA 28144
Phone: (704) 633-3121 Fax: (704) 633-5361
Email: rbsearch@rbsearch.com (www.rbsearch.com)

PUBLICATION OR REUSE OF THESE DRAWINGS
OR ANY DETAILS THEREFROM MUST BE WITH
THE WRITTEN CONSENT OF THE ARCHITECT



*Summey Engineering Associates, PLLC
Engineering - Land Planning - Consulting*

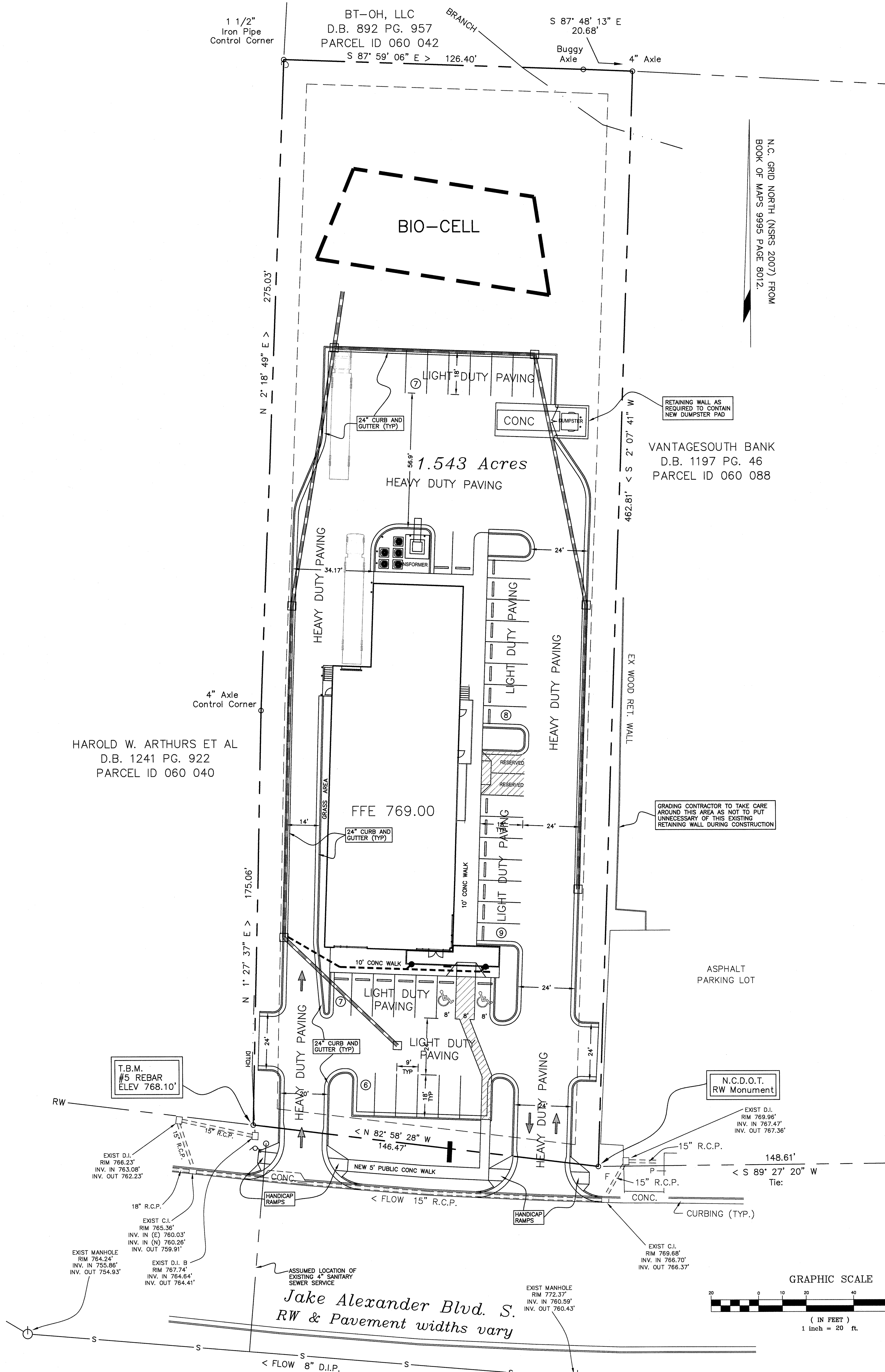
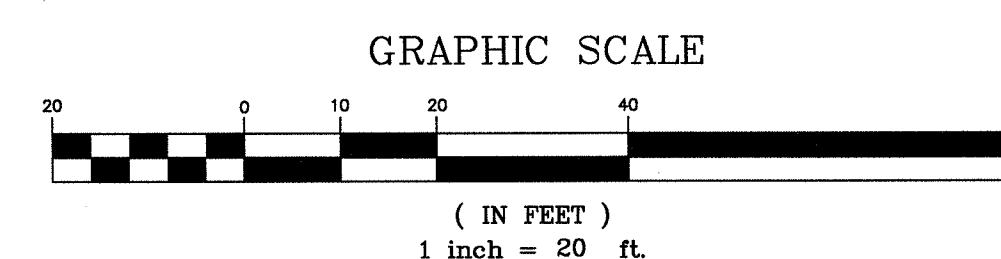
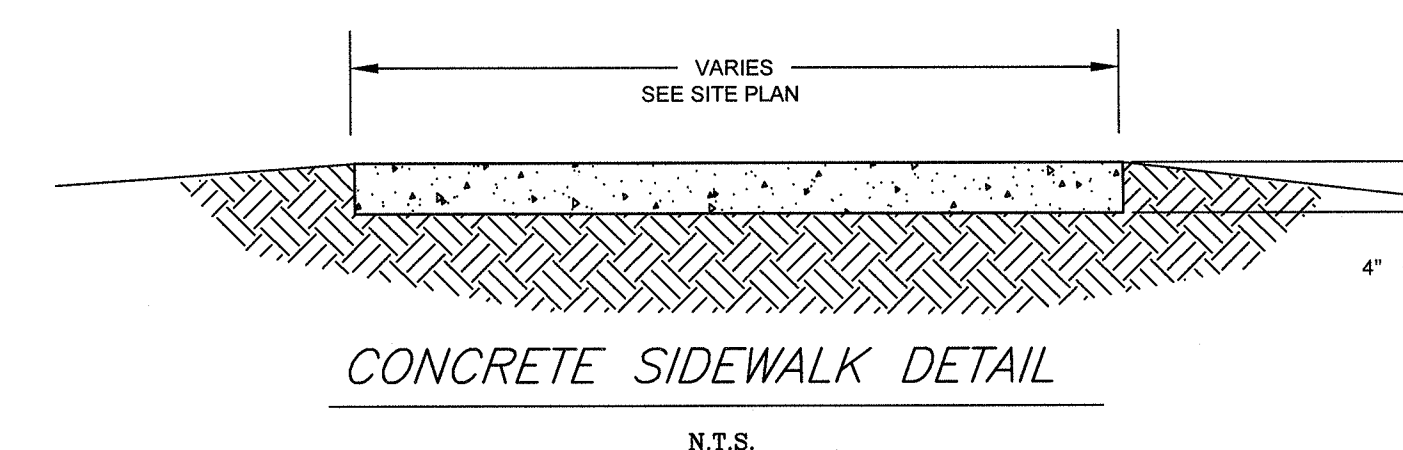
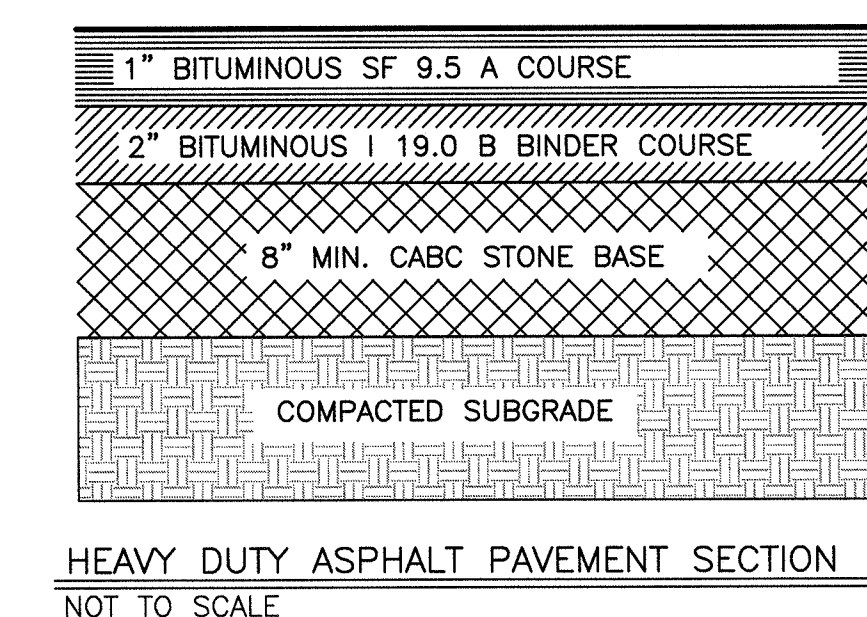
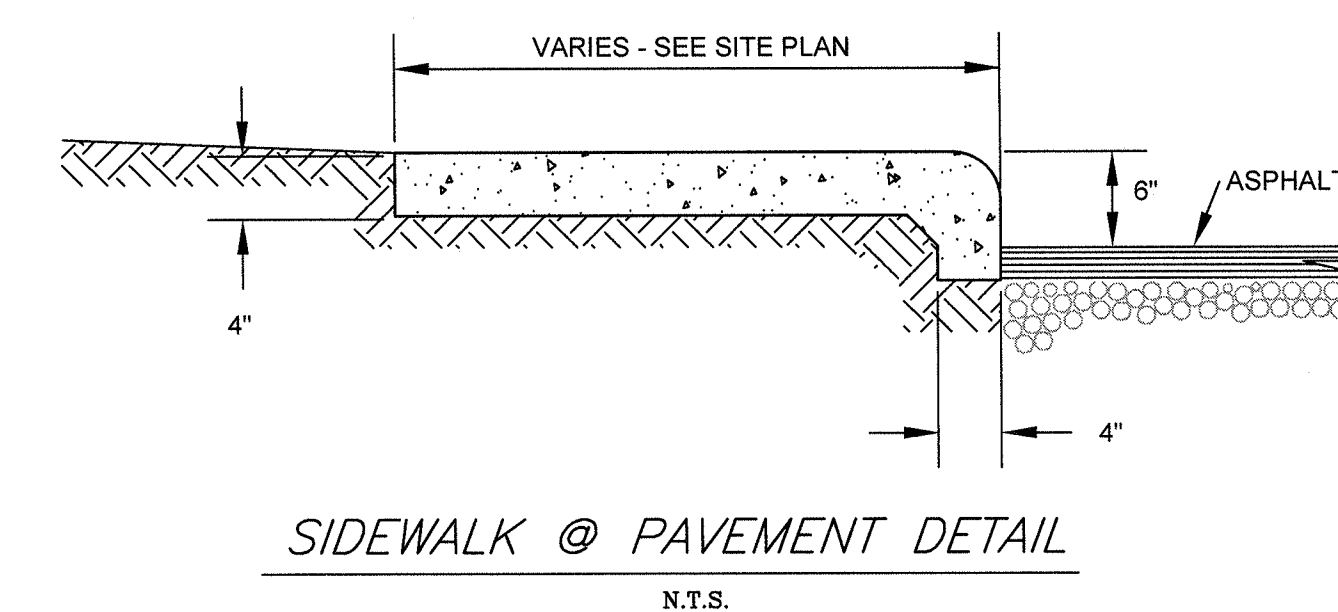
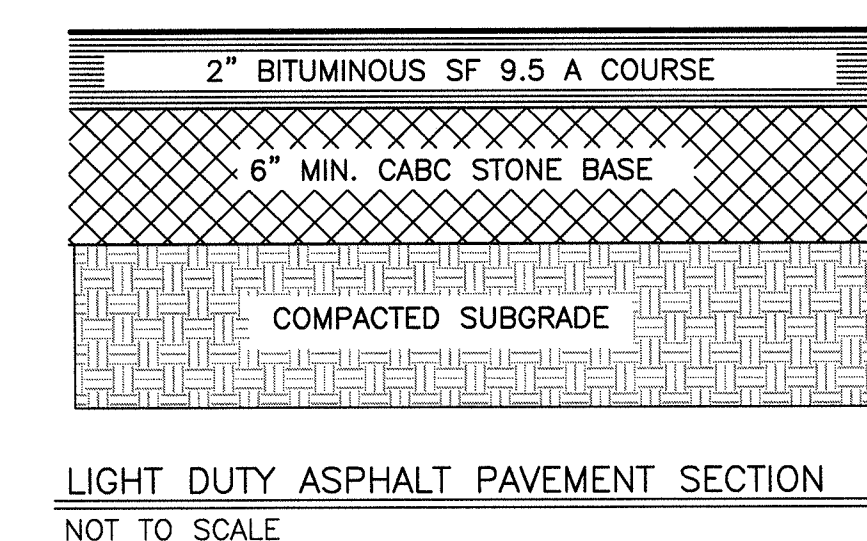
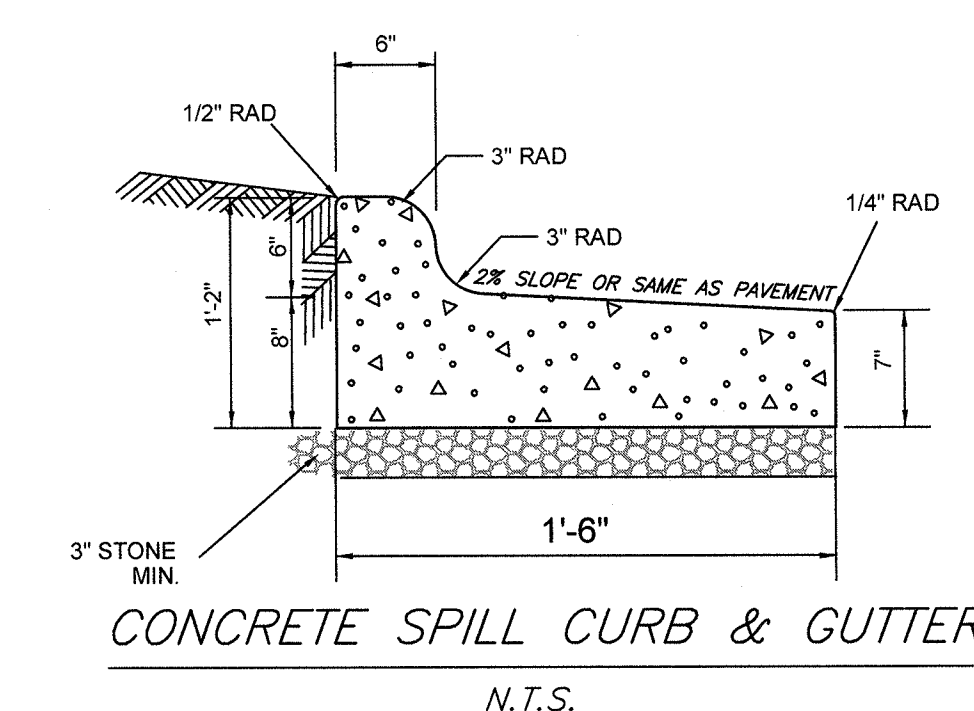
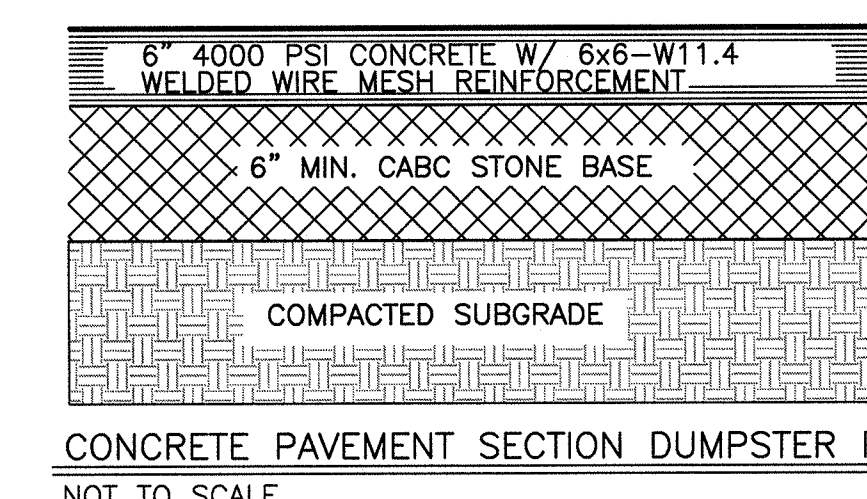
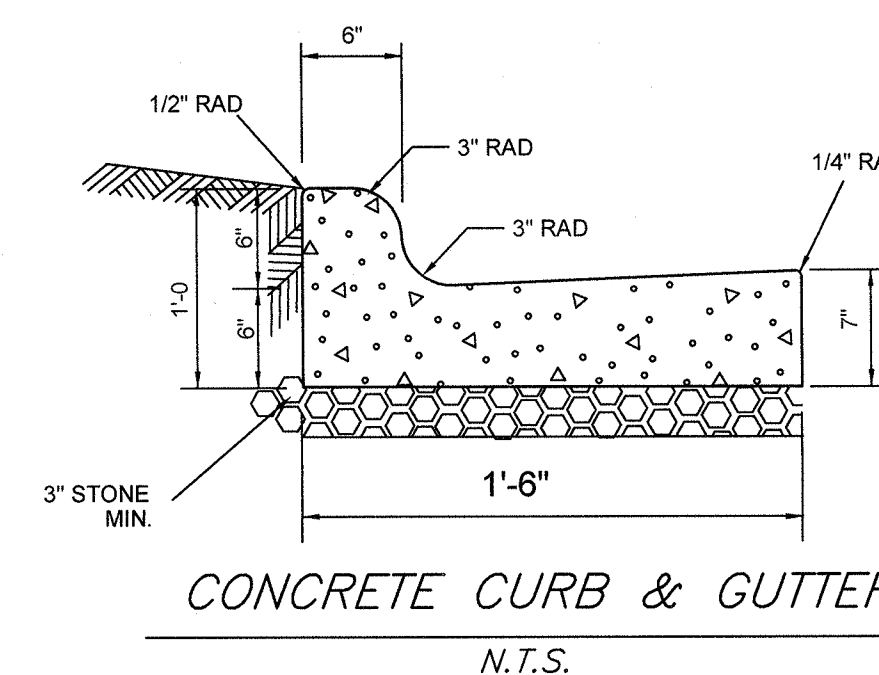
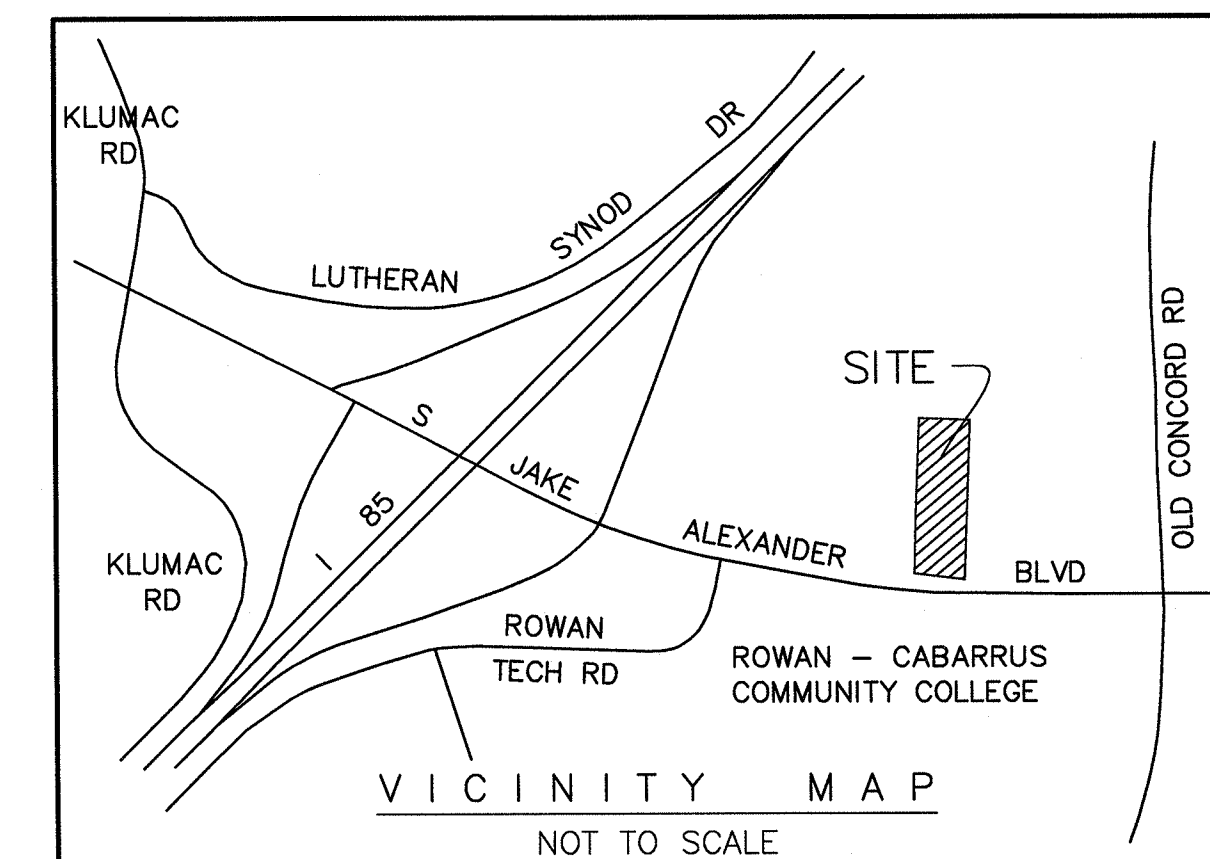
PO Box 900
Asheboro, NC 27204
Phone: 336-328-0902 Fax: 336-328-0922
E-mail: mack@asheboro.com

No.	Date.	Description.	By.
1	1.09.17	REMOVED PER CITY OF SAUSALITO AND RAMSEY BURGESS SMITH	NK

Rowan/Kannapolis
ABC STORE &
WAREHOUSE
Salisbury, NC

*PAVING AND
PARKING PLAN*

SHEET NO.
C-5
OF 8



3:AE 2021 ABC STORE\adm\BASE.E9821.dwg 1/9/2017 3:13:53 PM